

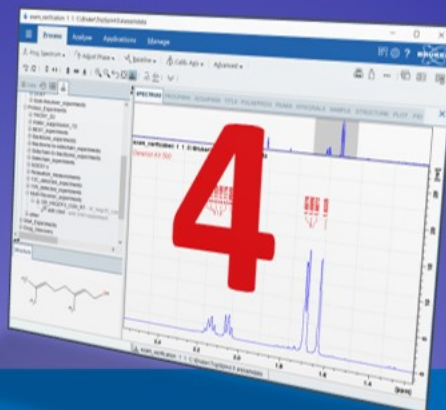
TopSpin 4

A New Design for Your Working Place



Welcome to the new look-and-feel of TopSpin 4!

- **More space for your data**
With improved placement of tools and a full screen option
- **Ergonomics for your hands**
Have less mouse clicks and shorter mouse movements for routine actions.
- **Navigation for your eyes**
Quickly browse and adapt the perspective to what you need right now

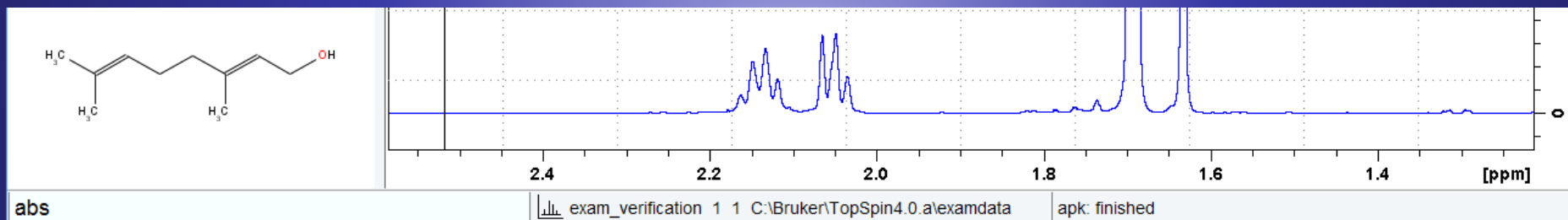


Command Line



The command line is an efficient tool for routine users.

- It is still there, but placed less prominently.
- Merged with the status line and data set ident, it gave back screen space in favor of spectra display.



Entered command

Identification of
current data set

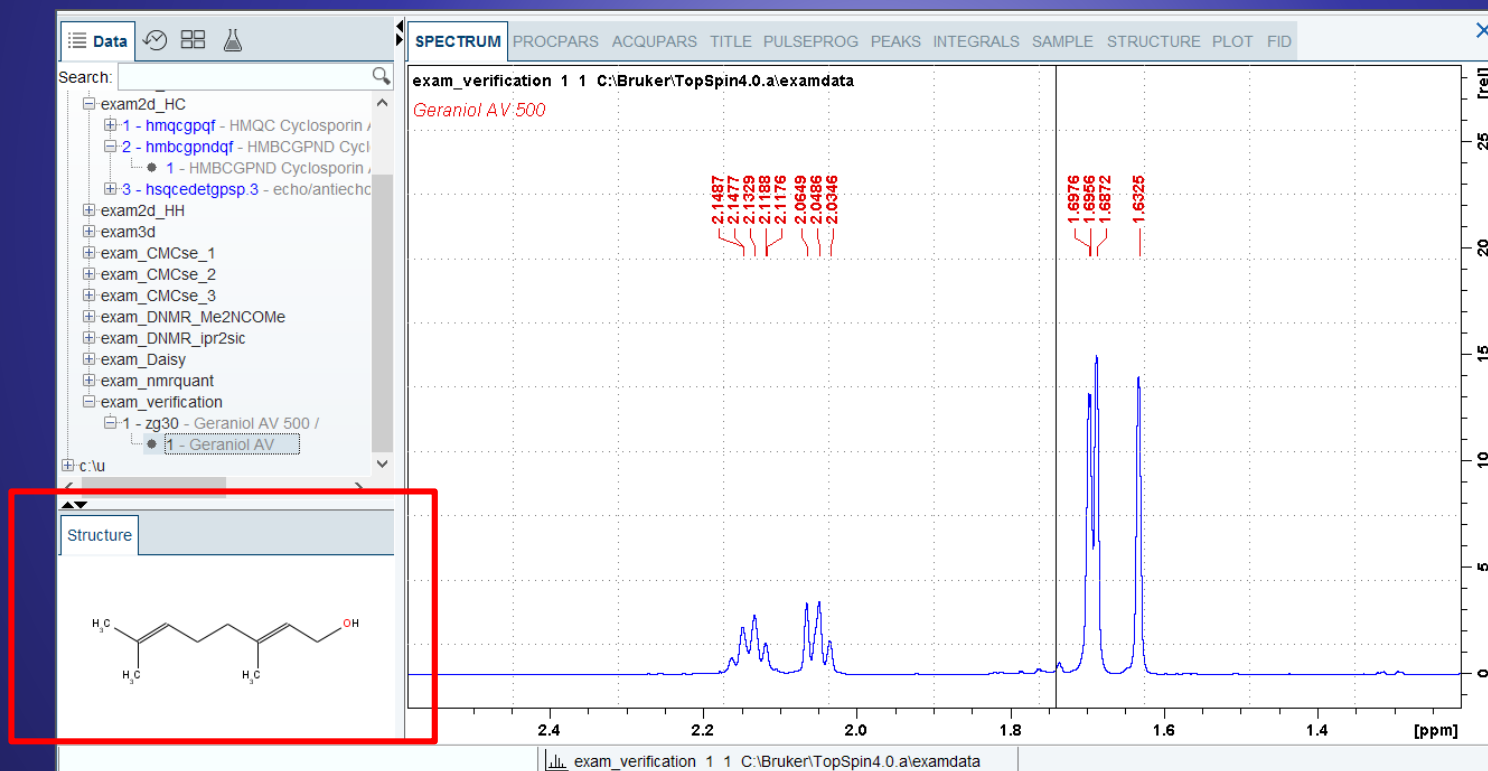
Last status message

Molecules



Molecule pictures inside a data window may cover important signals.

- Molecules have an own panel now, located bottom left
- This can be freely resized, or even switched off



Search



Finding data can be seamlessly integrated without a big 'Find Data' dialog.

- Enter your search phrase into the new search field
- Understands NAME, PULPROG, TITLE, these can also be combined
- Data trees can be selected/deselected, to limit the scope for your search

The screenshot shows the Bruker software interface with a search field highlighted in red. The search field contains the text "Search: pulprog=hsqc". Below the search field, the results are displayed as a list of data sets. The first result is "exam_verification 1 1 C:\Bruker\TopSpin4.0.a\ex".

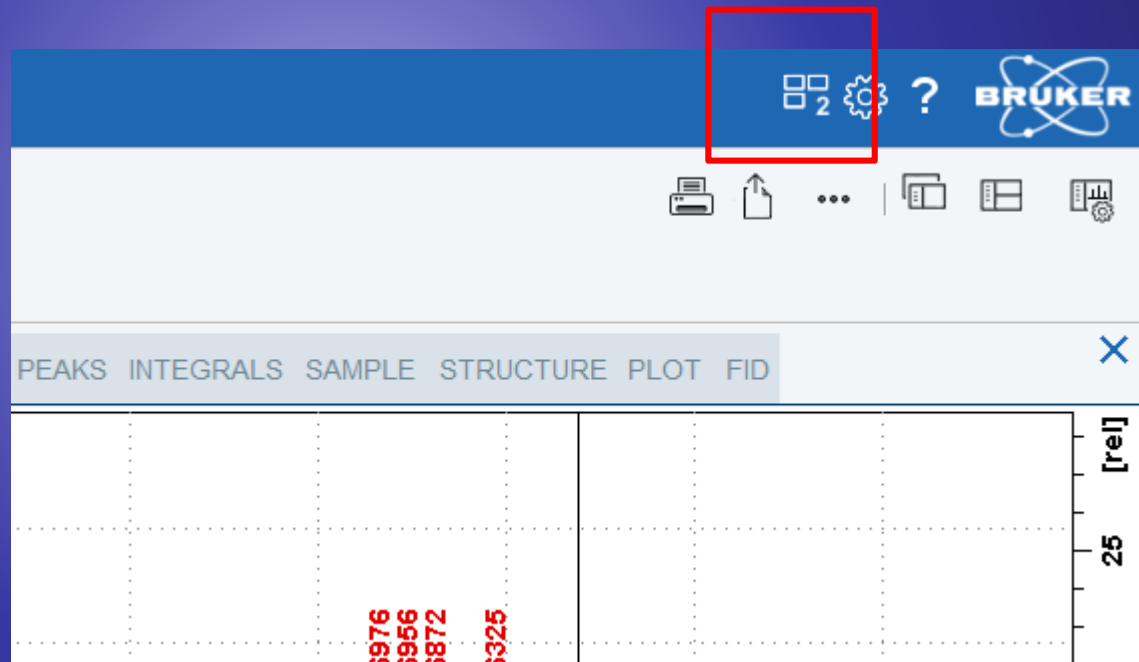
SPECTRUM	PROCPARS	ACQUPARS	TITLE	PULP
exam_verification	1	1	C:\Bruker\TopSpin4.0.a\ex	

Window Management



Many users focus on **one** data window - effective window switching is essential.

- The new Window Switcher is placed along Settings and Help icon.
- The small number indicates how many data sets are open in background

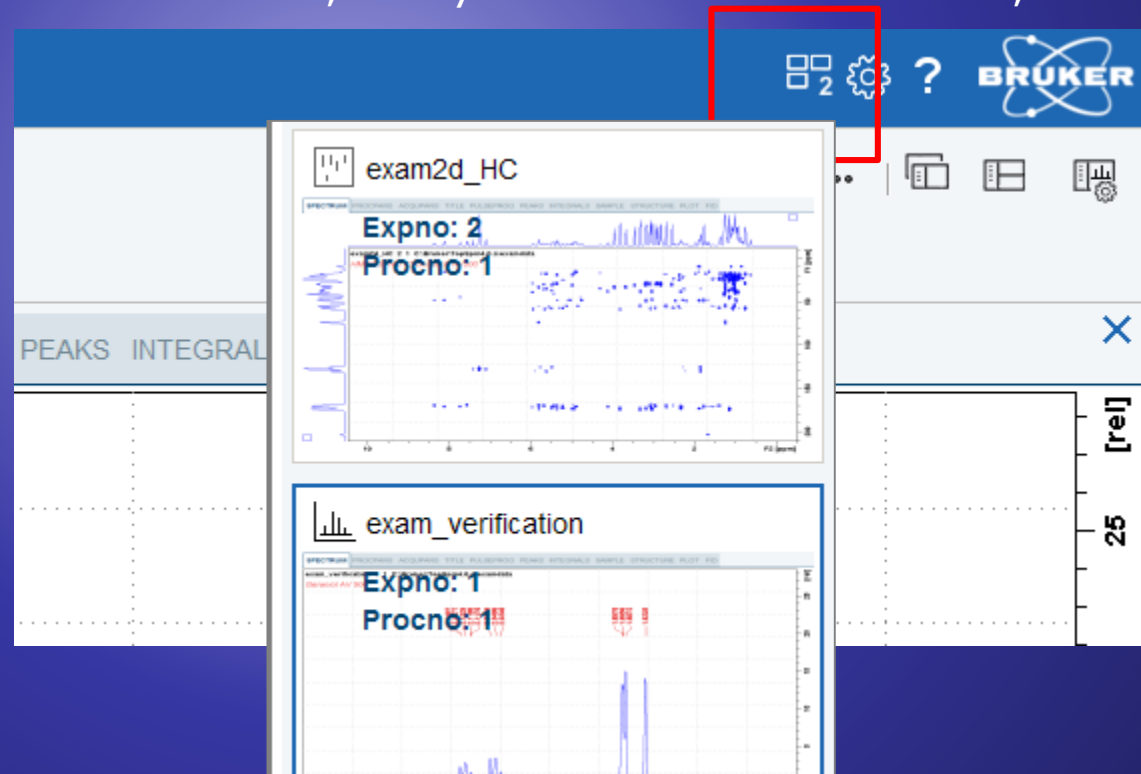


Window Management



Many users focus on **one** data window - effective window switching is essential.

- The new Window Switcher is placed along Settings and Help icon.
- The small number indicates how many data sets are open in background
- A click gives a live preview:
get a peek on the window content, and you can close it from here, too

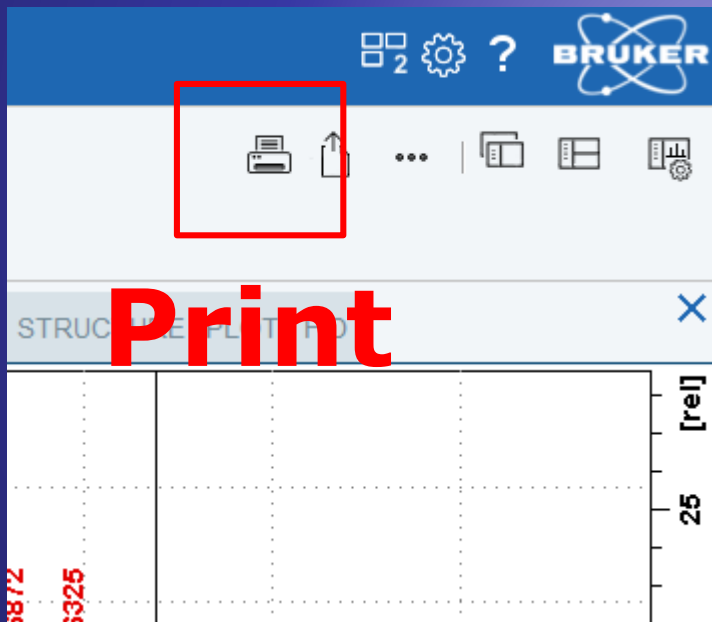


Print & Publish

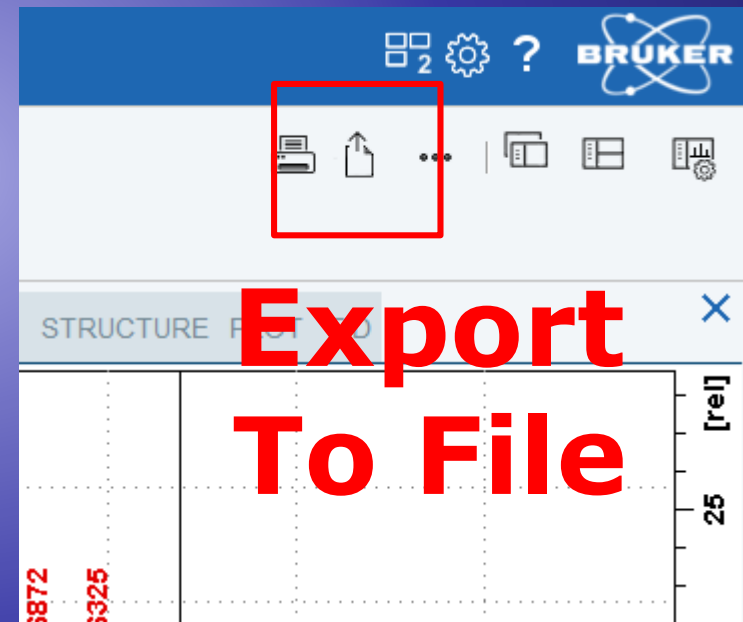


Printing and Publishing should be quickly accessible, anytime.

- Print, Export are prominently offered at a new location, outside of Flow tabs
- Always visible, not hidden when navigating in Flow menu



Print



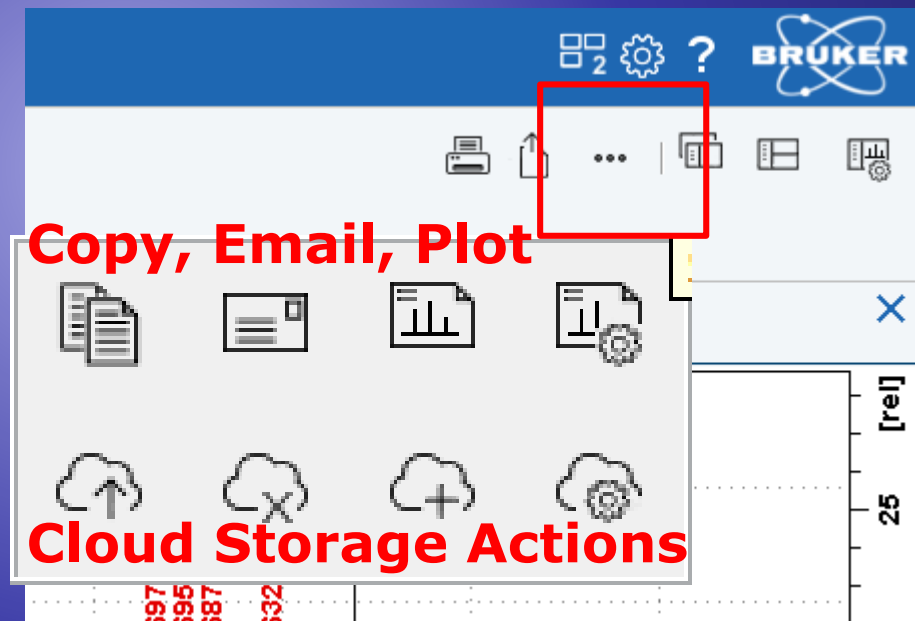
**Export
To File**

Print & Publish



Printing and Publishing should be quickly accessible, anytime.

- Print, Export are prominently offered at a new location, outside of Flow tabs
- Always visible, not hidden when navigating in Flow menu
- Find more in drop down panel: copy, email, autoplot, cloud storage actions

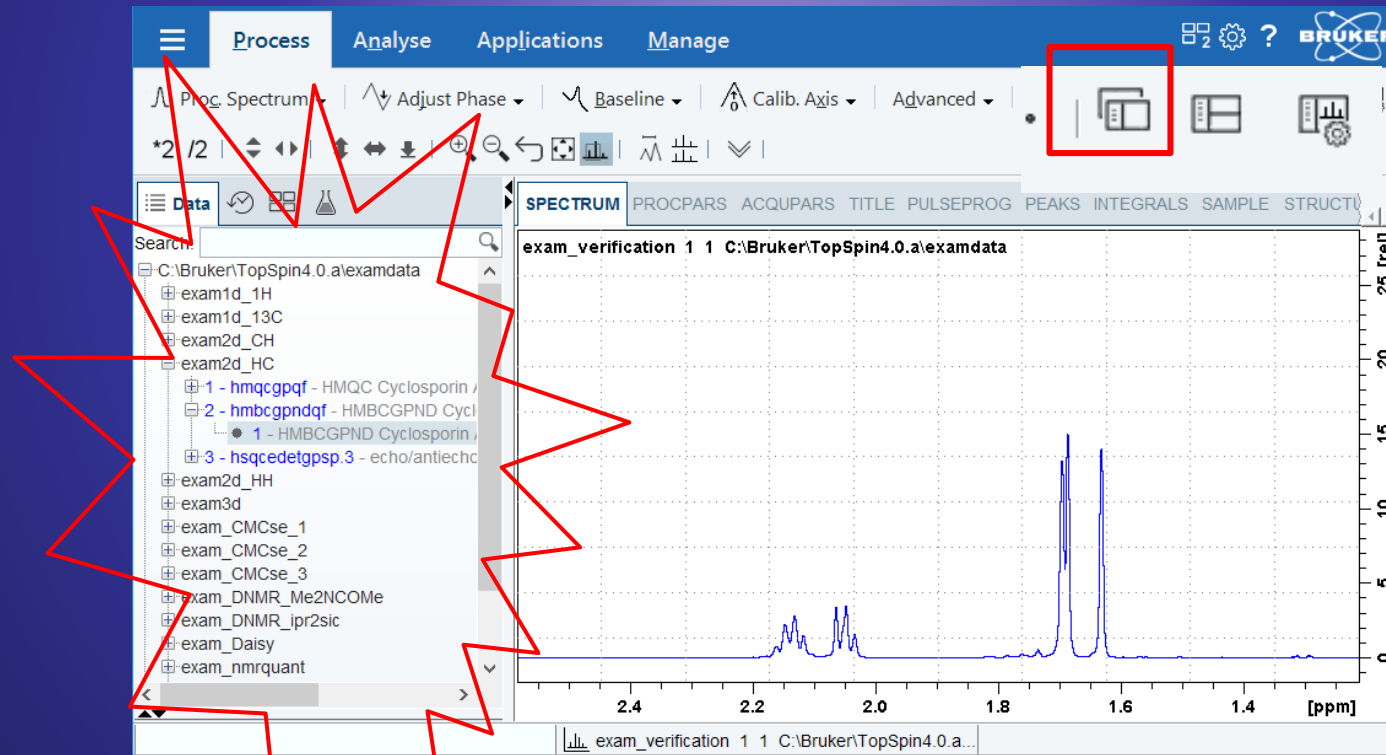


View Options



View options should be quickly accessible, anytime.

→ New button for 'Toggle Browser Column'

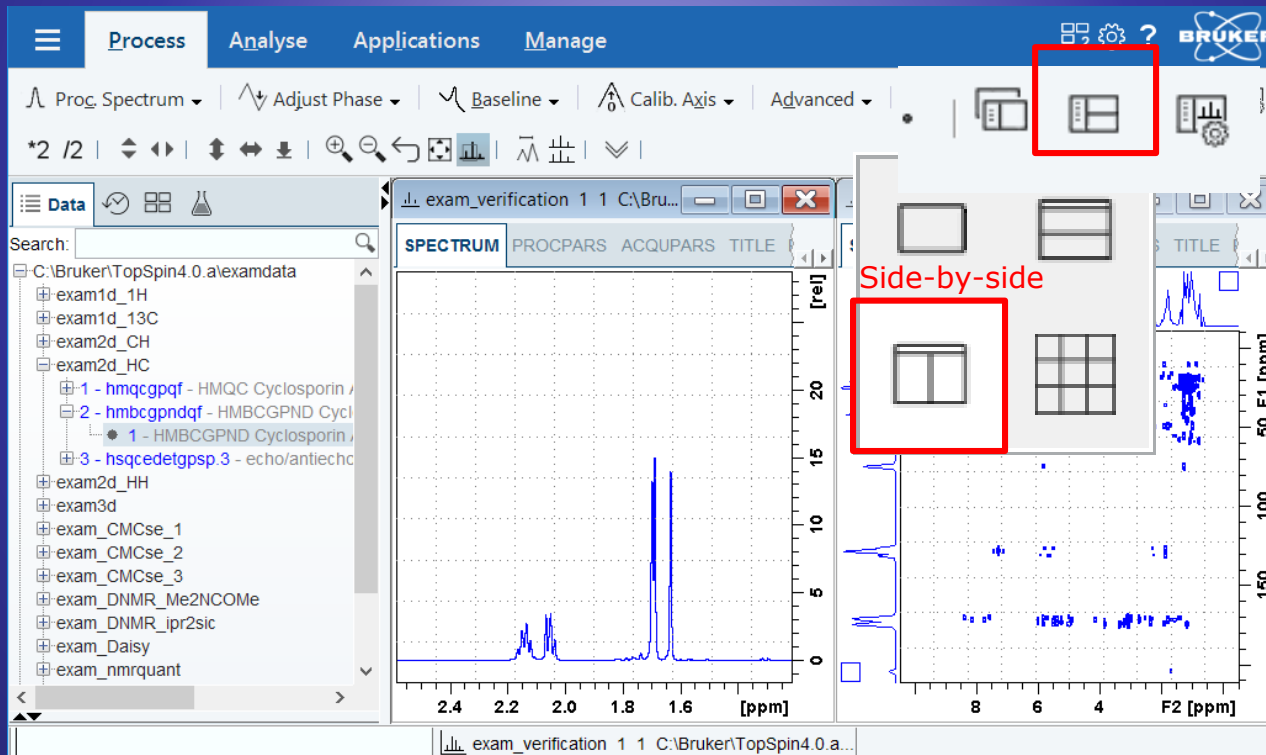


View Options



View options should be quickly accessible, anytime.

- Select from various window arrangements, e.g. side-by-side



View Options



View options should be quickly accessible, anytime.

→ Direct access to 'Display Properties'

The screenshot displays the Bruker software interface. The top menu bar includes 'Process', 'Analyse', 'Applications', and 'Manage'. Below the menu is a toolbar with various icons, including a red box highlighting the 'Display Properties' icon (a gear with a bar chart). The main window shows a spectrum plot with the x-axis labeled from 2.4 to 1.8 ppm. A search panel on the left lists data files, and a 'Display Properties' menu is overlaid on the right, listing various view options:

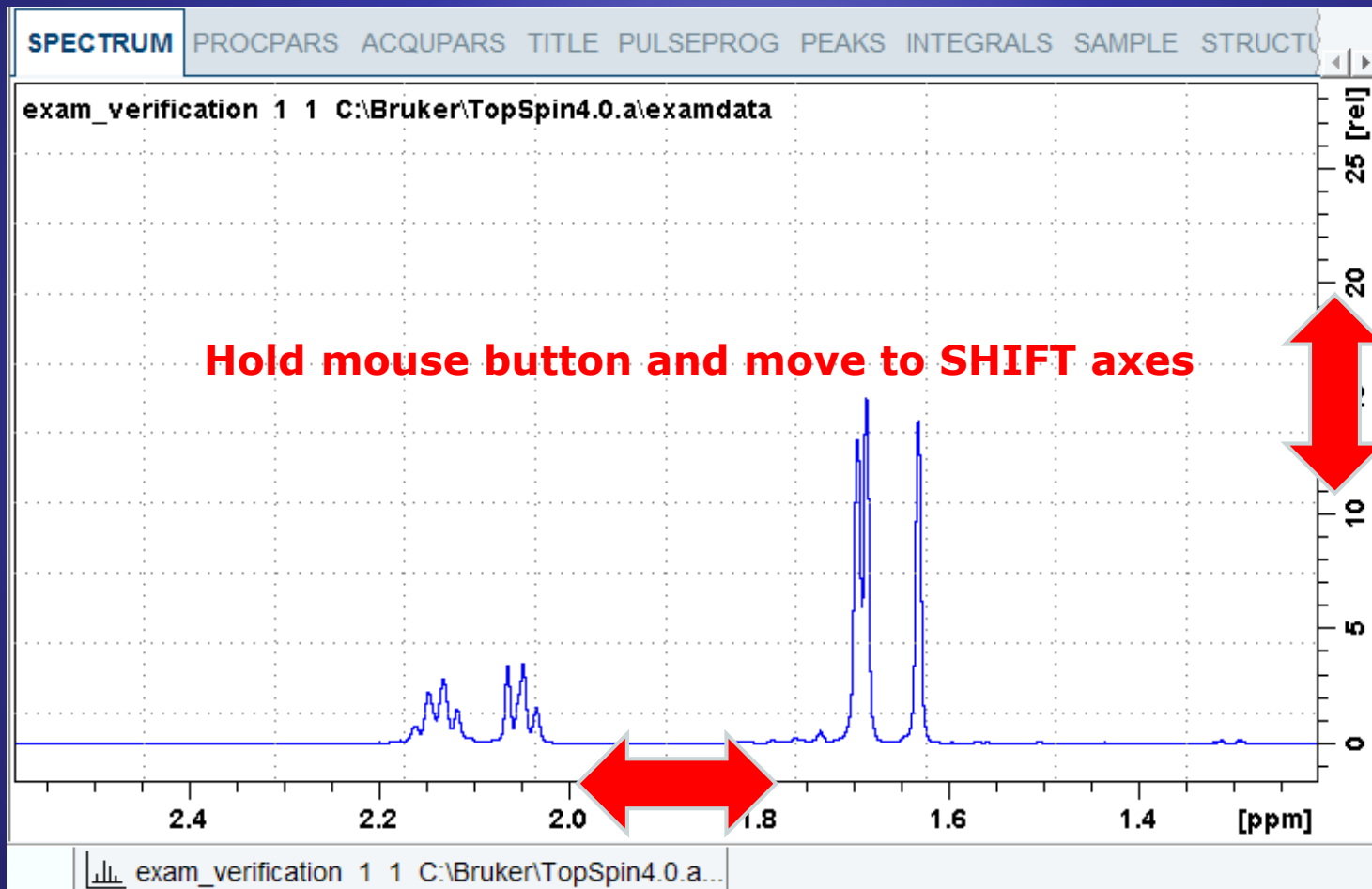
Peaks	Int.Lines	Int.Bars	Title
Multipl.	Molecule	Points	Hz/ppm
Y Axis	Grids	Overview	Position
Zoom	Reset	More...	

Shift, Scroll, Zoom



The toolbar offers Shift and Scroll actions – but distant from data window.

→ Nearly all actions can be applied directly on the data axes

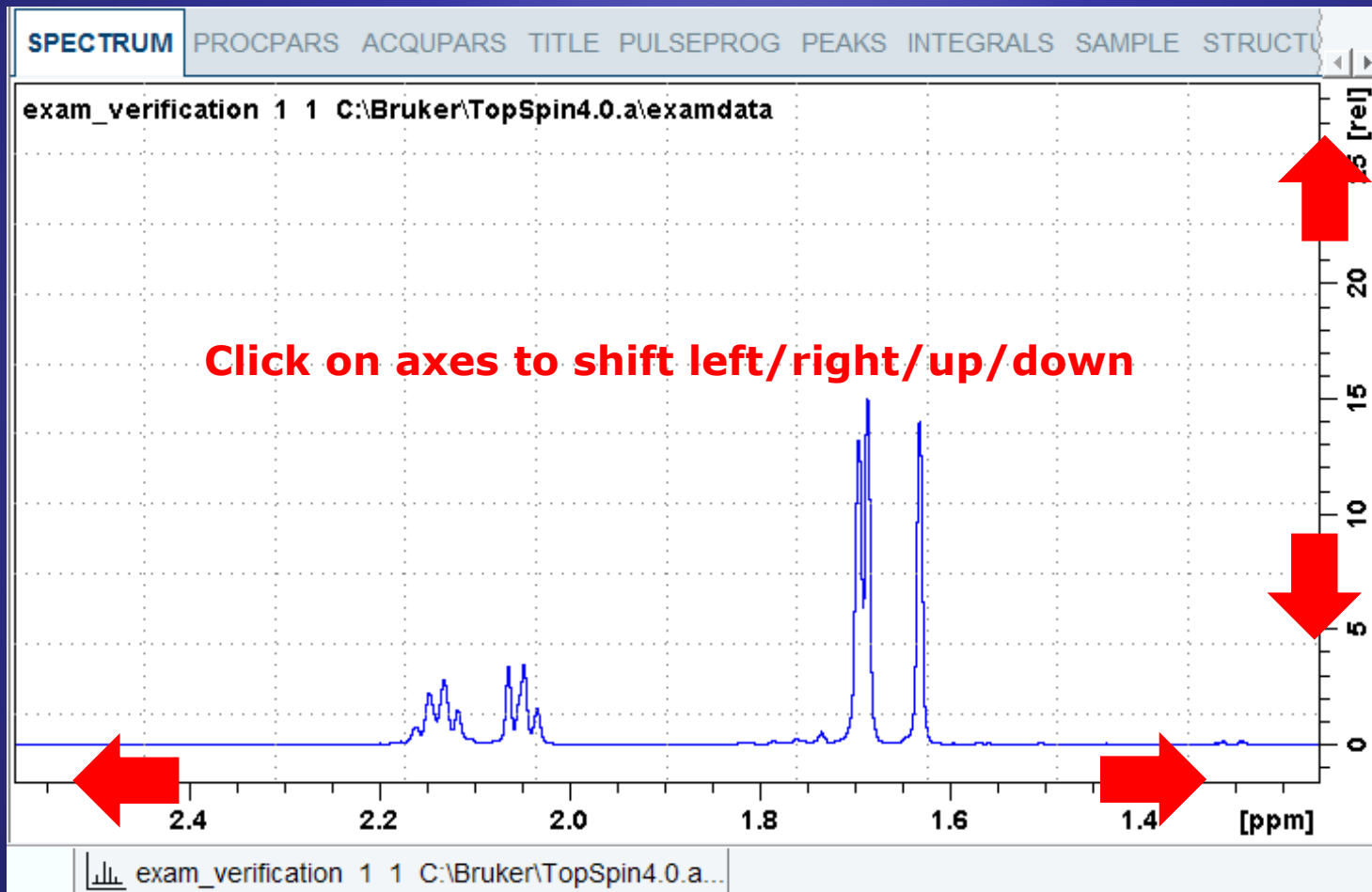


Shift, Scroll, Zoom



The toolbar offers Shift and Scroll actions – but distant from data window.

→ Nearly all actions can be applied directly on the data axes

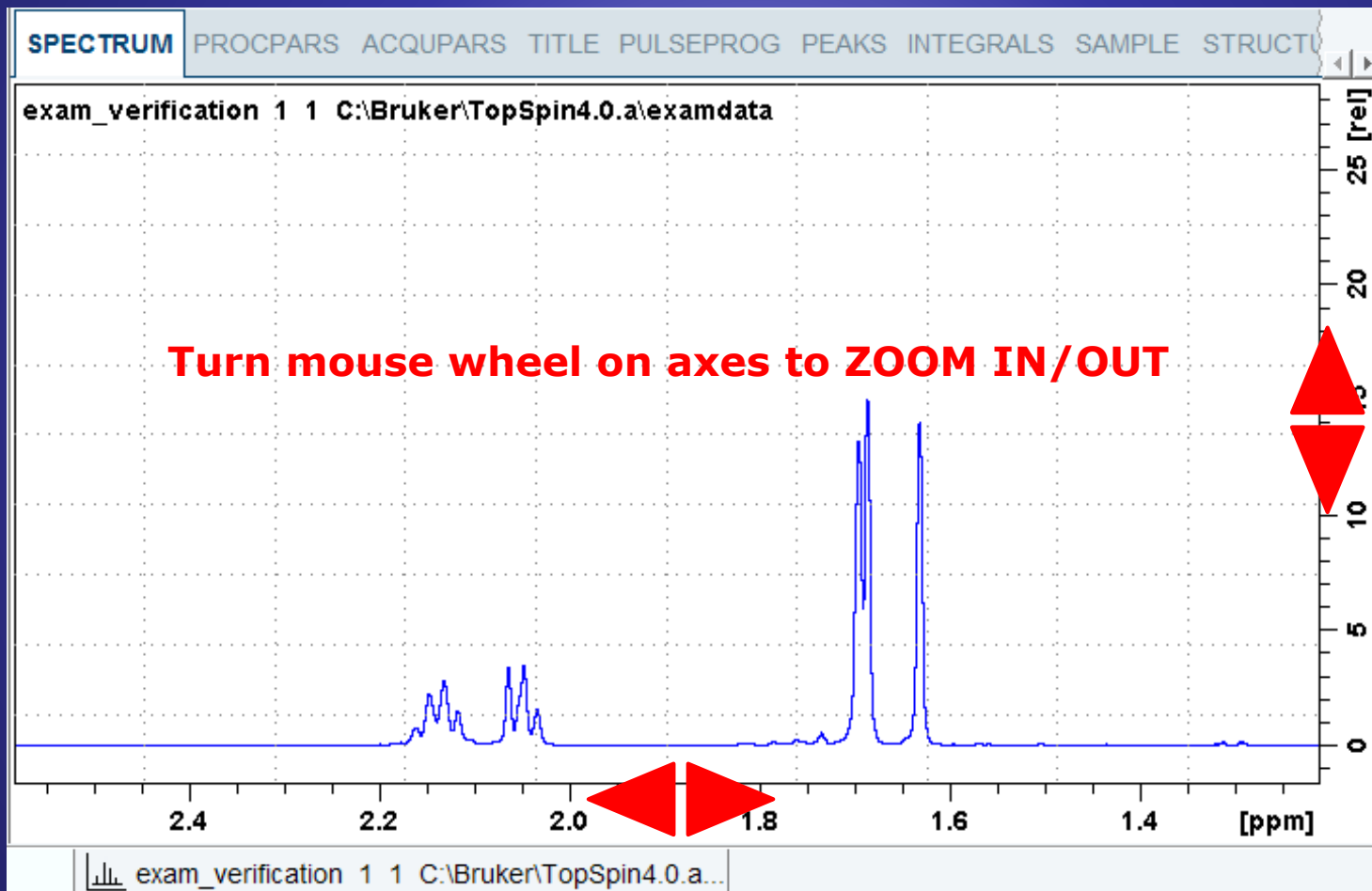


Shift, Scroll, Zoom



The toolbar offers Shift and Scroll actions – but distant from data window.

→ Nearly all actions can be applied directly on the data axes

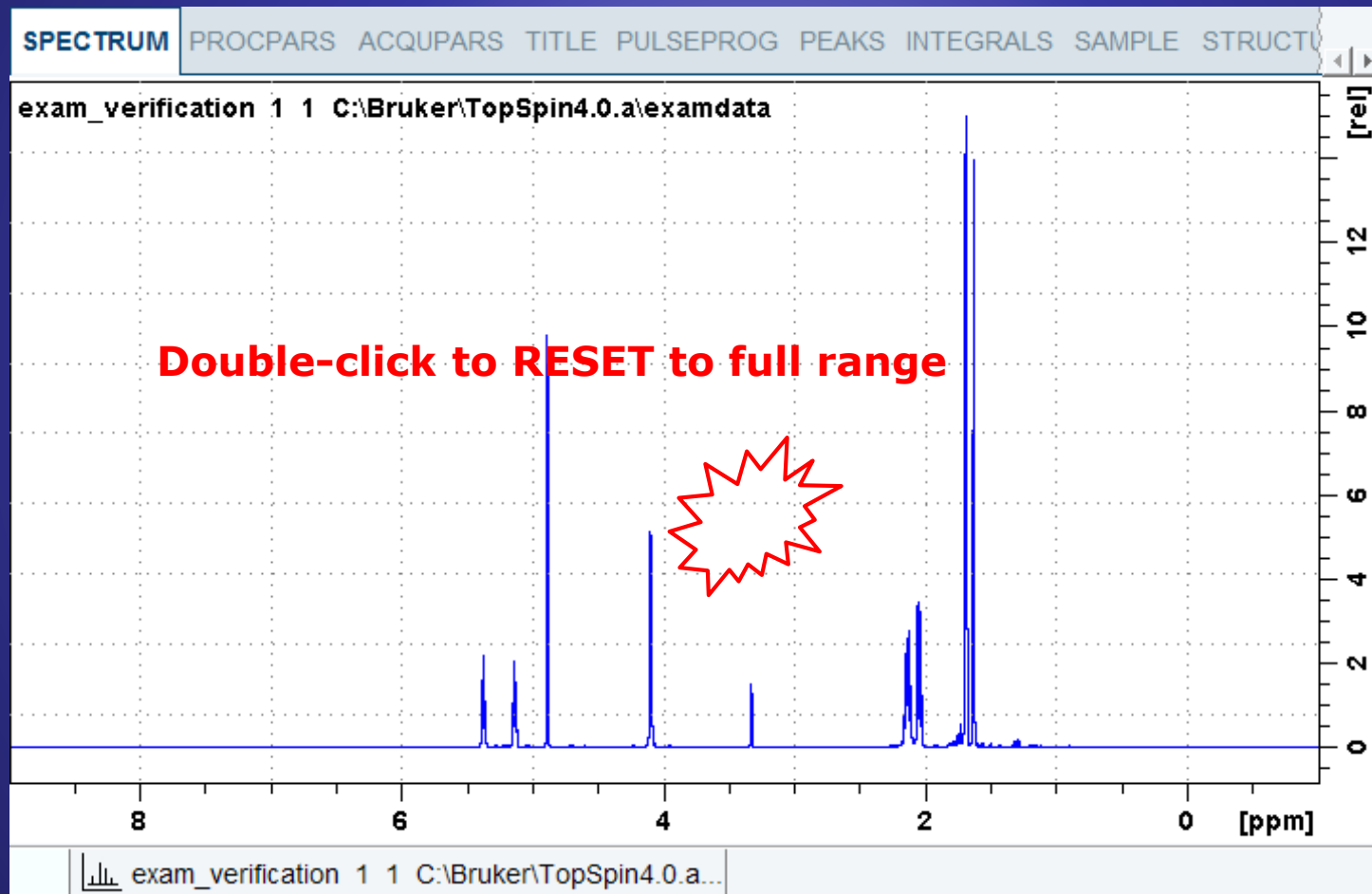


Shift, Scroll, Zoom



The toolbar offers Shift and Scroll actions – but distant from data window.

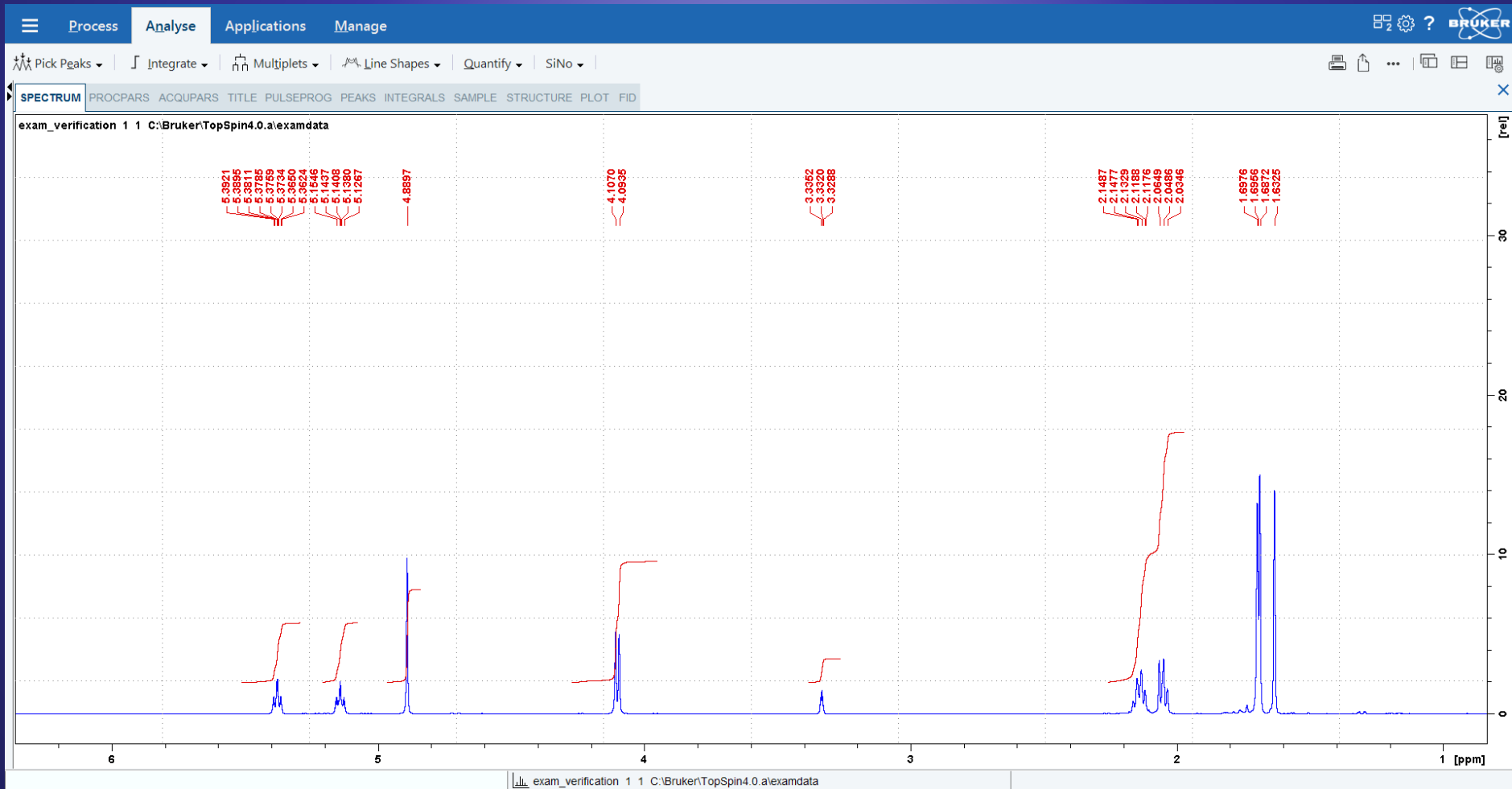
→ Nearly all actions can be applied directly on the data axes

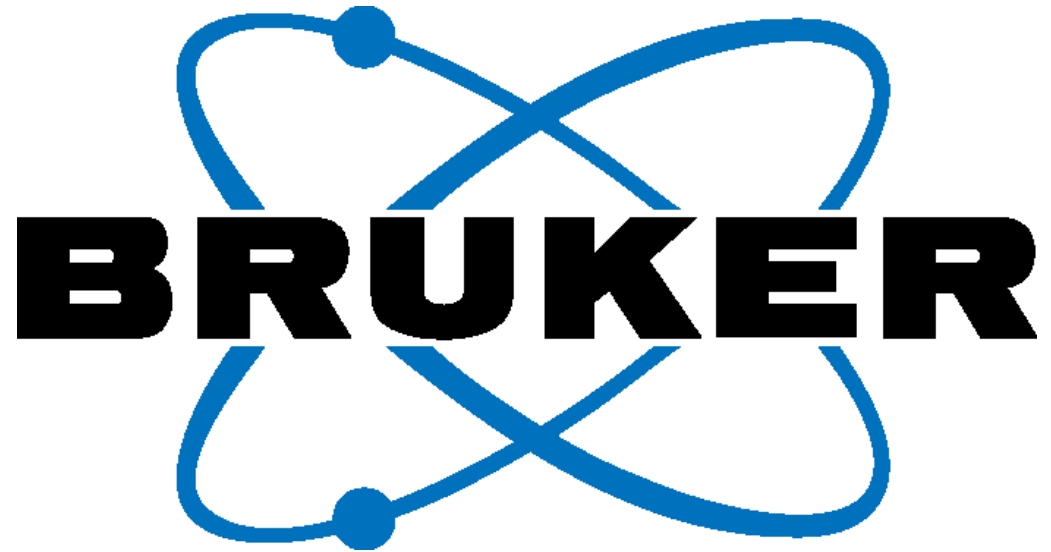


The full screen width & height can be used for spectra display.

➔ Toggle off the Data Browser (Ctrl+D), then press key **F11**...

... and enjoy a full screen experience!





Innovation with Integrity