



# CodeMeter License Management

- Installing and Managing Software Licenses

User Manual

Version 021



Copyright © by Bruker Corporation

All rights reserved. No part of this publication may be reproduced, stored in a retrieval system, or transmitted, in any form, or by any means without the prior consent of the publisher. Product names used are trademarks or registered trademarks of their respective holders.

© February 06, 2019 Bruker Corporation

Document Number: 1000057561

P/N: H162728

---

# Contents

<b>1</b>	<b>Introduction and Product Order</b> .....	<b>5</b>
<b>2</b>	<b>Installing the License - Online Activation</b> .....	<b>7</b>
2.1	Troubleshooting .....	11
2.1.1	CodeMeter Installation on CentOS 5 .....	11
2.1.2	Supported Browsers for License Activation .....	11
2.1.3	CodeMeter Installation on Linux and macOS .....	12
<b>3</b>	<b>Offline Activation</b> .....	<b>13</b>
<b>4</b>	<b>Moving an installed license to a different computer - Re-Hosting</b> .....	<b>19</b>
<b>5</b>	<b>License Installation Scenarios</b> .....	<b>23</b>
5.1	Single-Place Solution .....	23
5.2	Multi-Place Solution - Floating License .....	23
<b>6</b>	<b>Contact</b> .....	<b>25</b>



# 1 Introduction and Product Order

Since 2016, Bruker software packages have started to use the new “CodeMeter” license management. A license for Bruker software can be ordered from the Bruker website. Just go to [https://www.bruker.com/nmr\\_license\\_requests.html](https://www.bruker.com/nmr_license_requests.html) and fill out the request form. License department will process the order details and generate an “activation ticket” and provide it to the customer. A ticket consists of a 25 character code like e.g.:

PH3T4-9D9U9-FNSGP-J9FXP-TTNXC

This code works as an access key to the purchased license package. It authorizes the customer to assign the license package to a computer of personal choice.

Install the software product on the computer system. During installation you may also be requested to install the package “CodeMeter Runtime”. This is the component of the license management system. Most installation routines will perform this task automatically.



## 2 Installing the License - Online Activation

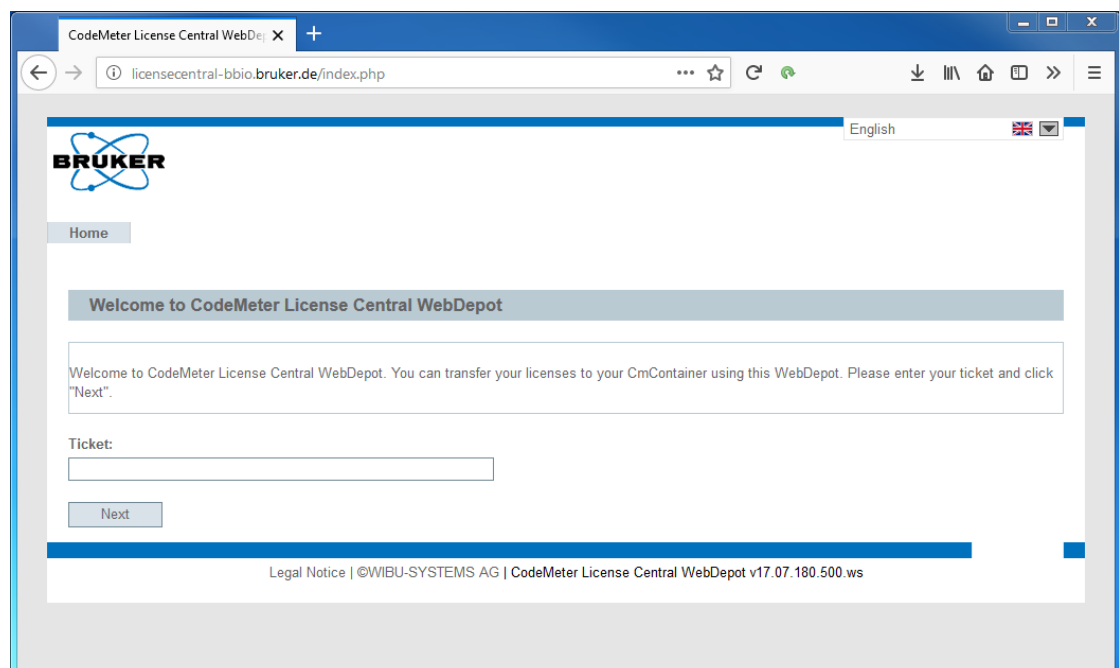
The following instructions assume that the computer system has access to the internet. The transfer and activation of the license then can be performed by an online process. Please note that internet connectivity is only required at the time of the activation process. Once the license has been transferred any further use of the software product is independent of internet access.

For an offline alternative see section “Offline activation”.

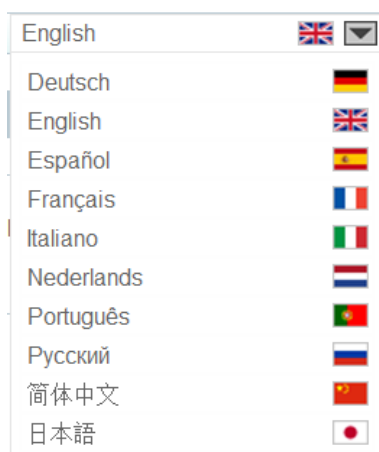
On the computer system that shall hold the license, open a web browser and navigate to the following address:

<http://licensecentral-bbio.bruker.de>

You should see the welcome screen of the activation process:



The activation process is available in ten international languages. The preferred language can be selected at the top right edge of the screen:



## Installing the License - Online Activation

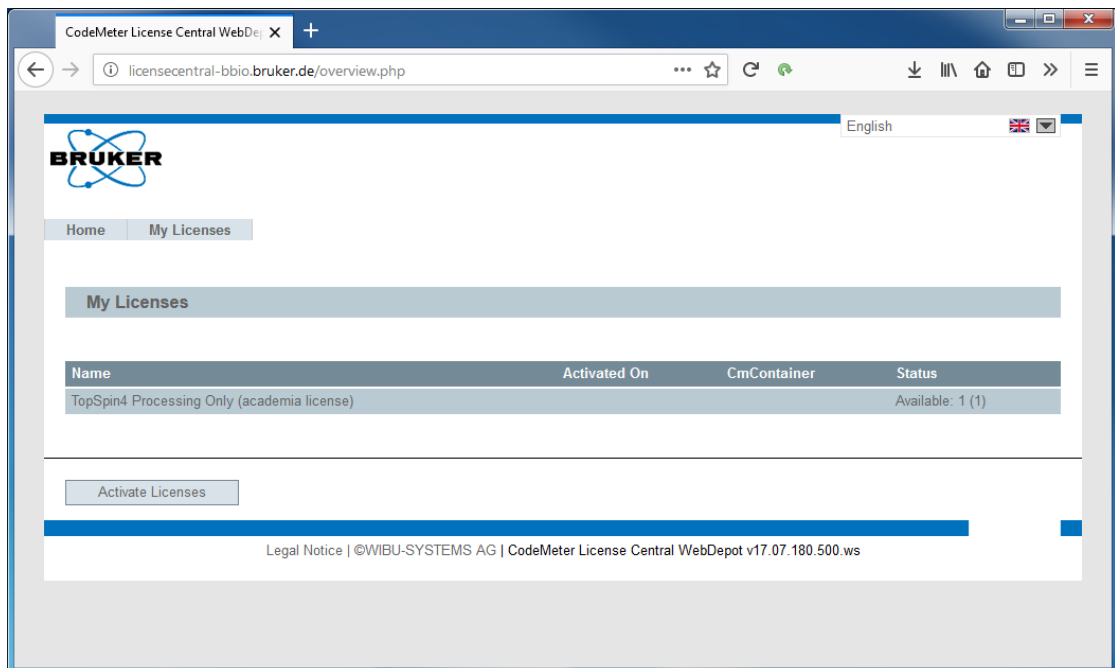
Now enter the ticket code in the respective form field and click “Next”:

**Ticket:**

PH3T4-9D9U9-FNSGP-J9FXP-TTNXC

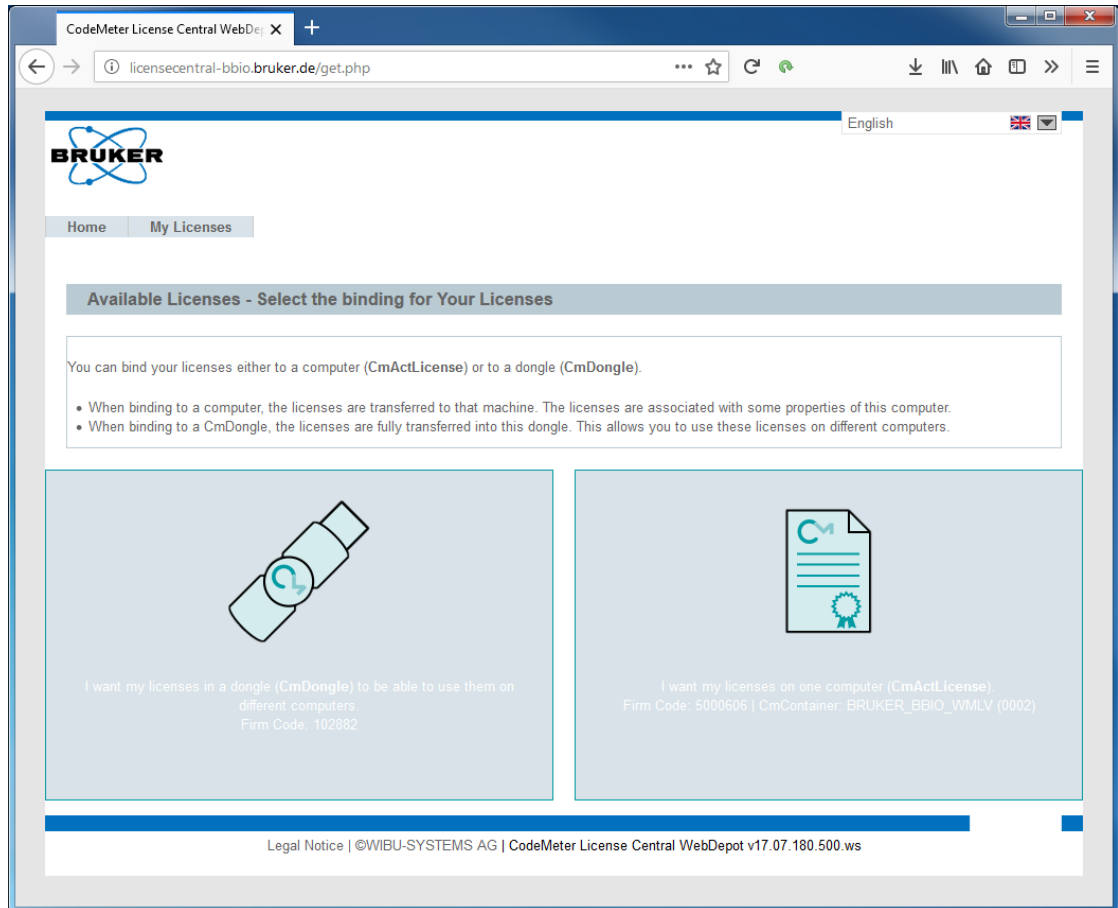
Next

The activation services will now display the license package(s) which have been deposited for the provided ticket.



Click on “Activate Licenses” in order to initiate the activation process. A ticket can refer not only to a single product license but also to a combination of products. Therefore you are requested to select which license you like to transfer to the current computer. In this example, there is only one product available. It has already been selected by a check mark.

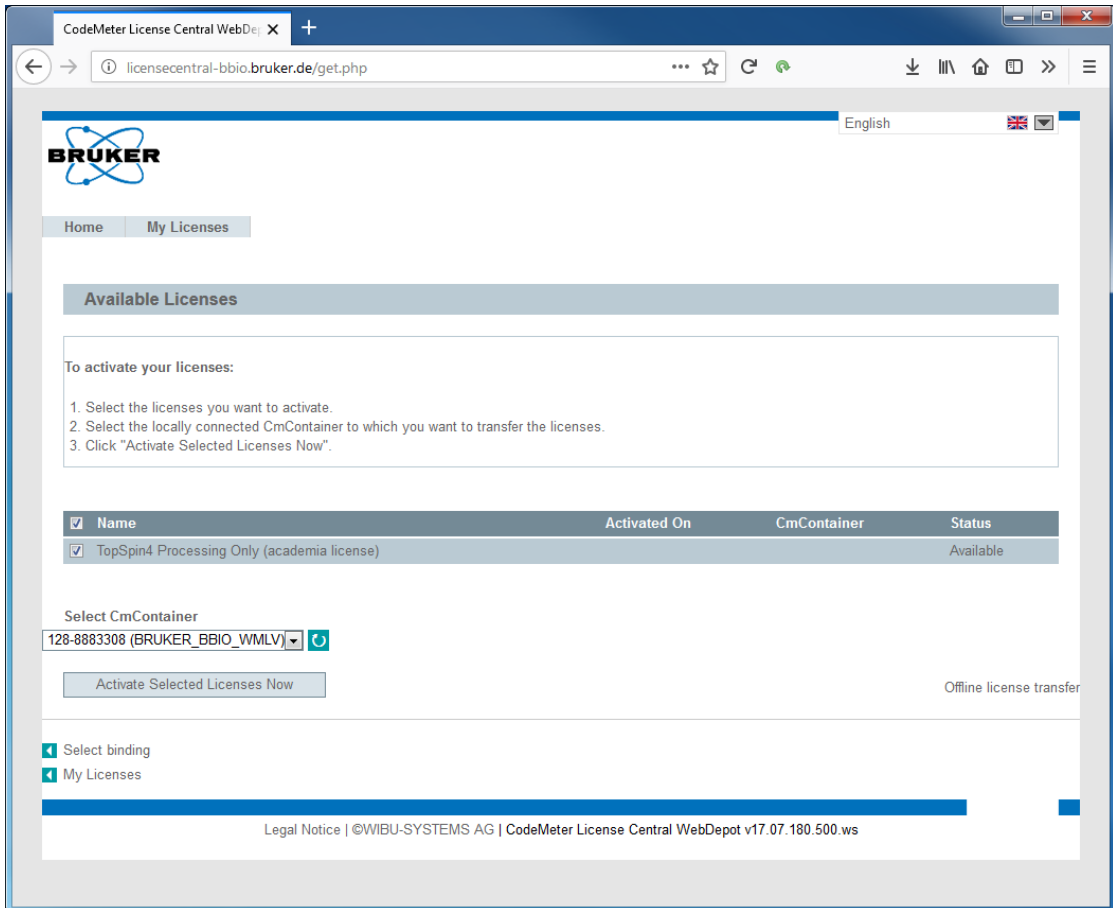




You should select the right option “CmActLicense”.

The option “in a dongle” is intended for Bruker internal use and is not supported for customers.

# Installing the License - Online Activation



The entry "Select CmContainer" is automatically filled with your default container. Do not change this selection unless instructed otherwise e.g. by Bruker support team members. Finally click on "Activate Selected Licenses Now". The online license transfer starts now:

## Online License Transfer

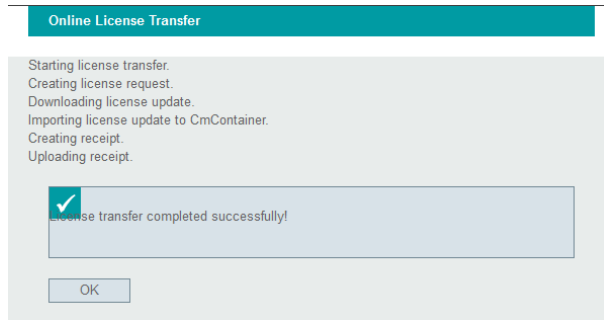


**Please wait!** The selected licenses are transferred. **This process may take several minutes to complete.** Please do not remove the CmContainer during this process and do not reload this page.



Starting license transfer.  
Creating license request.  
Downloading license update.

If you see the following message the license transfer has been completed successfully and the requested license is now active for use on the computer system:



## 2.1 Troubleshooting

---

### 2.1.1 CodeMeter Installation on CentOS 5

---

The TopSpin installation installs the CodeMeter Runtime version 5.10. Newer versions do not run under Centos 5.

The CodeMeter Runtime 5.10 online activation and the WebAdmin user interface works with firefox-45.8.0 . Former firefox versions or other web browsers may fail.

Firefox upgrade hints:

A change in the yum configuration is necessary because the Centos 5 support has expired in March 2017 .

login as root

```
cp -p /etc/yum.repos.d/CentOS-Base.repo /etc/yum.repos.d/CentOS-Base.repo_backup  
sed -e 's|^mirrorlist=|#&|' -e
```

```
's|^#baseurl=http://mirror.centos.org/centos/$releasever/(.*)/
```

```
$basearch/|baseurl=http://vault.centos.org/5.11/1/$basearch/|'
```

**(Please note that above three lines starting with sed declare a single command and must be written in a single line).**

```
/etc/yum.repos.d/CentOS-Base.repo_backup > /etc/yum.repos.d/CentOS-Base.repo
```

```
yum install firefox.$(uname -i)
```

if yum install shows conflicts update the whole Centos 5 to the last version 5.11 executing "yum update" and retry the Firefox Installation.

### 2.1.2 Supported Browsers for License Activation

---

Activation has been tested successfully with:

- Firefox Version 63.0.3
- Chrome 68.0.3440.84
- Safari 12 (macOS 10.14)
- Internet Explorer 11.0.9600.19155

Edge can currently only be used for offline activation.

### 2.1.3 CodeMeter Installation on Linux and macOS

---

- The **Linux** version of the CodeMeter runtime delivered with TopSpin comes as an RPM package and thus can only be installed on RPM based distributions like Red Hat (CentOS, Fedora) or Suse. If you use a different, not directly supported, distribution (Debian, Ubuntu,...), please download the CodeMeter Runtime here: <https://www.wibu.com/downloads-user-software.html> and follow the given installation details.
- CM runtime for diverse **macOS** versions are available on the same site.

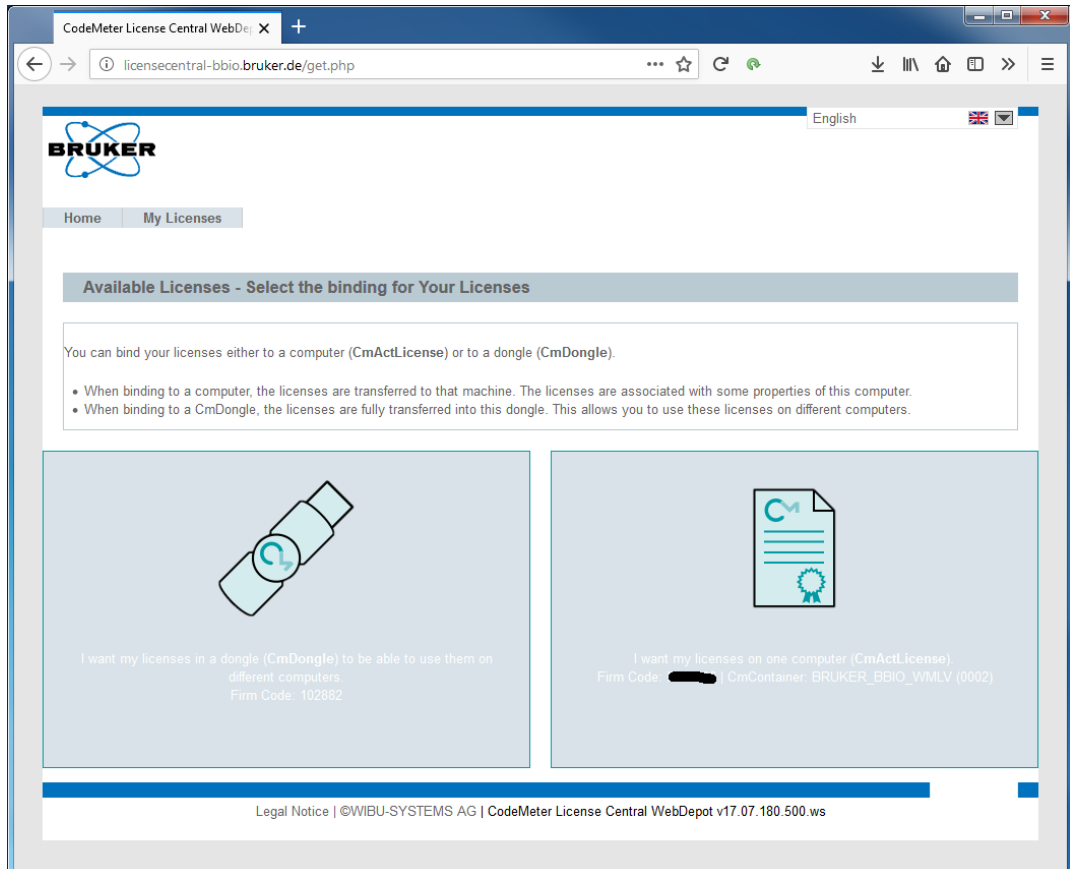
## 3 Offline Activation

It is also possible to retrieve a license if your workstation has no internet connection. To transfer the license you need to follow these steps:

1. On the workstation which needs a license open the “CodeMeter Control Center” via the start menu entry.
2. Click the “Activate License” or “License Update” button (depends on whether a license has been activated before) and proceed with “Next”.

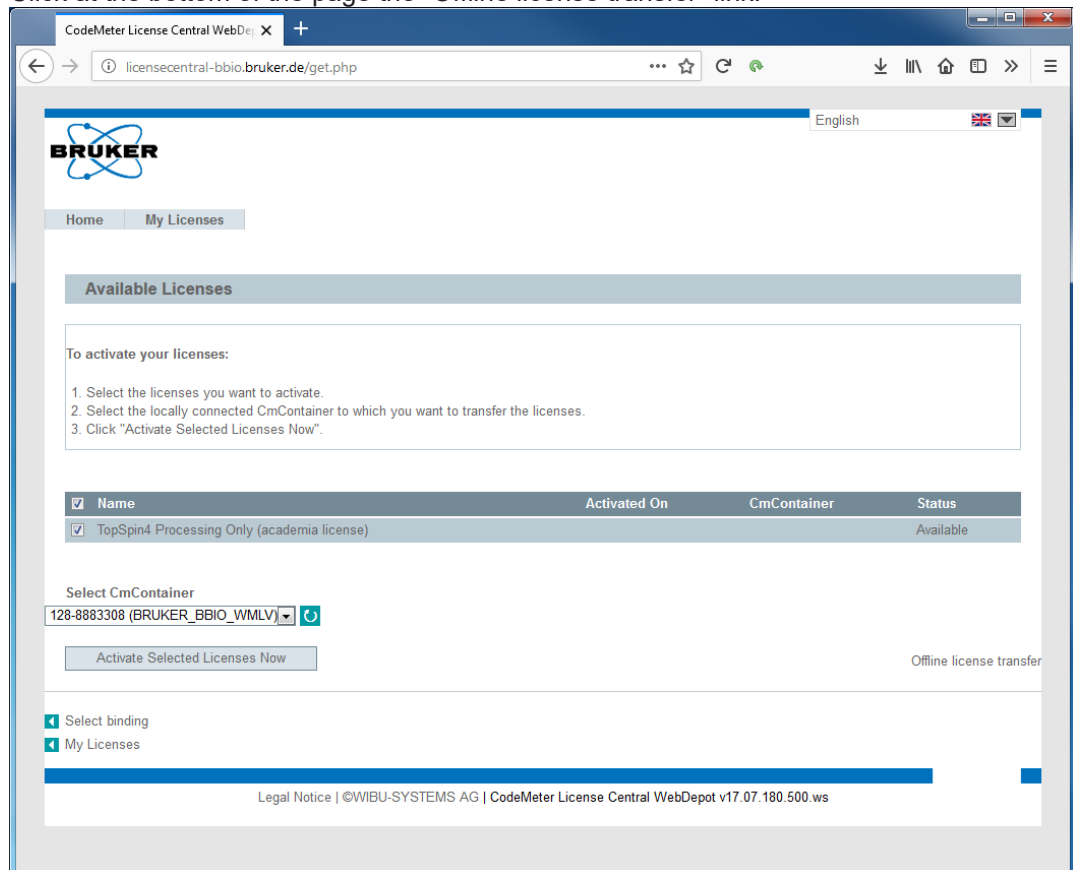


3. Select the first radio button with the option “Create license request” and click “next”.
4. Save the WibuCmRaC file on the harddisk by following the steps from the wizard. When done, transfer this file to the workstation which is connected to the internet.
5. On a workstation which has internet access open the following URL: <http://licensecentral-bbio.bruker.de> and enter the ticket number. Click “Activate License”.



You should select the right option "CmActLicense". The option "in a dongle" is intended for Bruker internal use and is not supported for customers.

6. Click at the bottom of the page the “Offline license transfer” link.

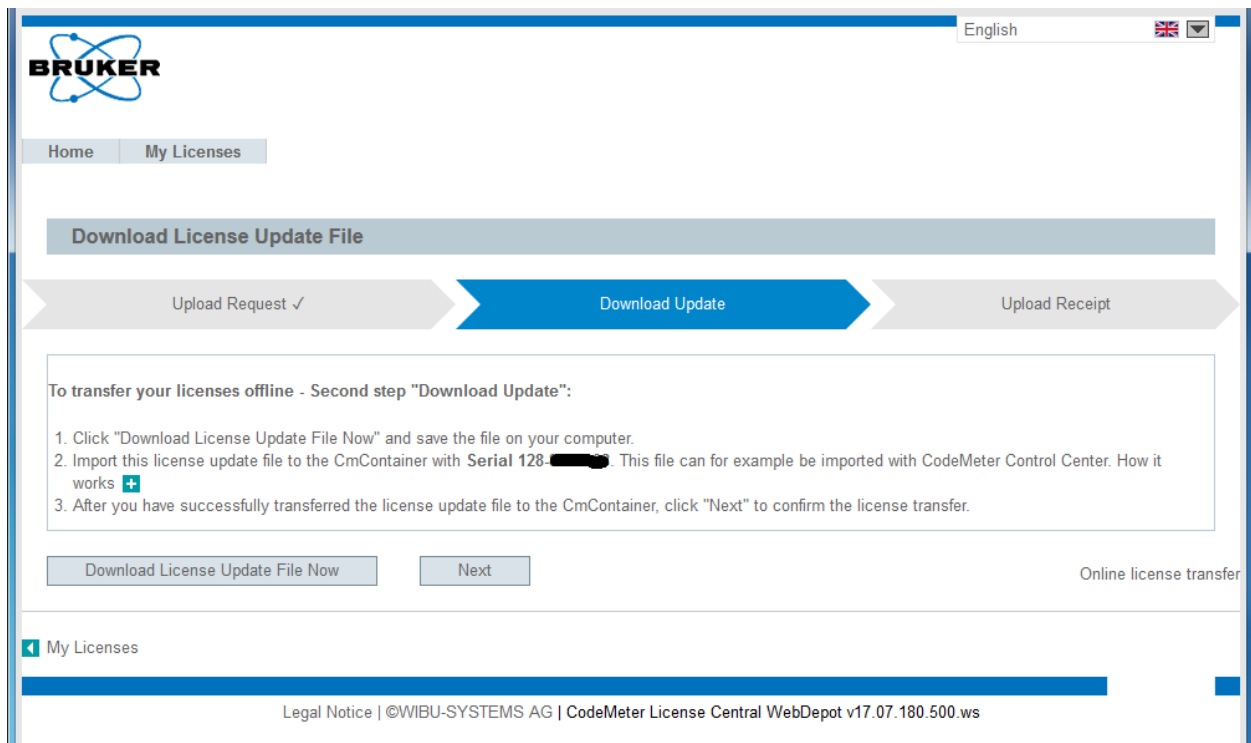


7. Upload the just generated WibuCmRaC file using the workstation which is connected to the internet by selecting the file and clicking the “Upload Request And Continue Now” button.

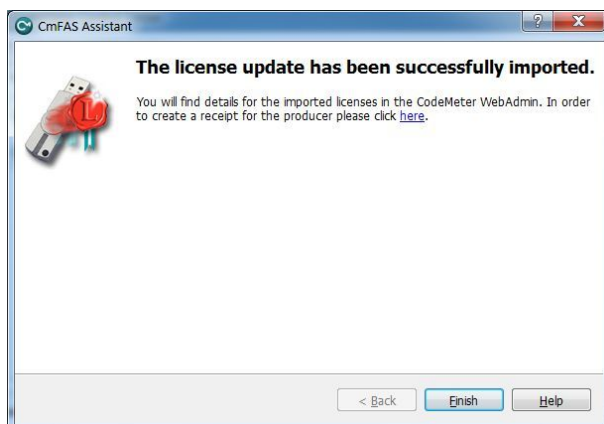
### Pick license request file (\*.WibuCmRaC)

128-8883281.WibuCmRaC

8. Now click the “Download License Update File Now” Button and save it.

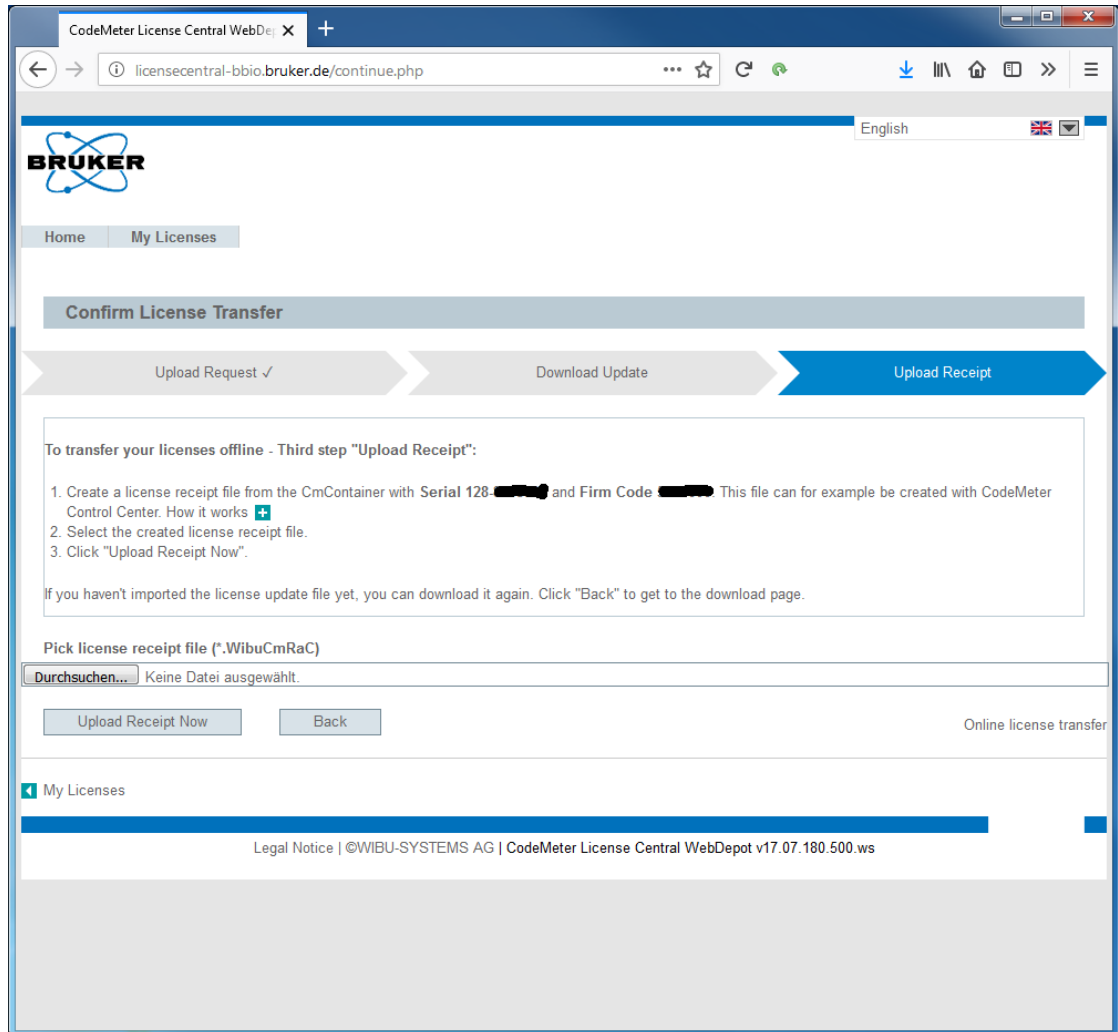


9. This WibuCmRaU file needs to be transferred to the workstation with no internet connection and imported using the CodemeterContral Center. Click the "License Update" or "Activate License" button and then select the "Import license update" option and click next. Select the WibuCmRaU file and click "Commit" and finally click "Finish".



10. Now click the "License Update" or "Activate License" button again and select the "Create receipt" option and save it. When done, transfer this receipt file to the workstation which is connected to the internet.
11. This receipt needs to be uploaded on the workstation with internet connection by clicking "Next" on the webpage to get to the final "Upload Receipt" step.





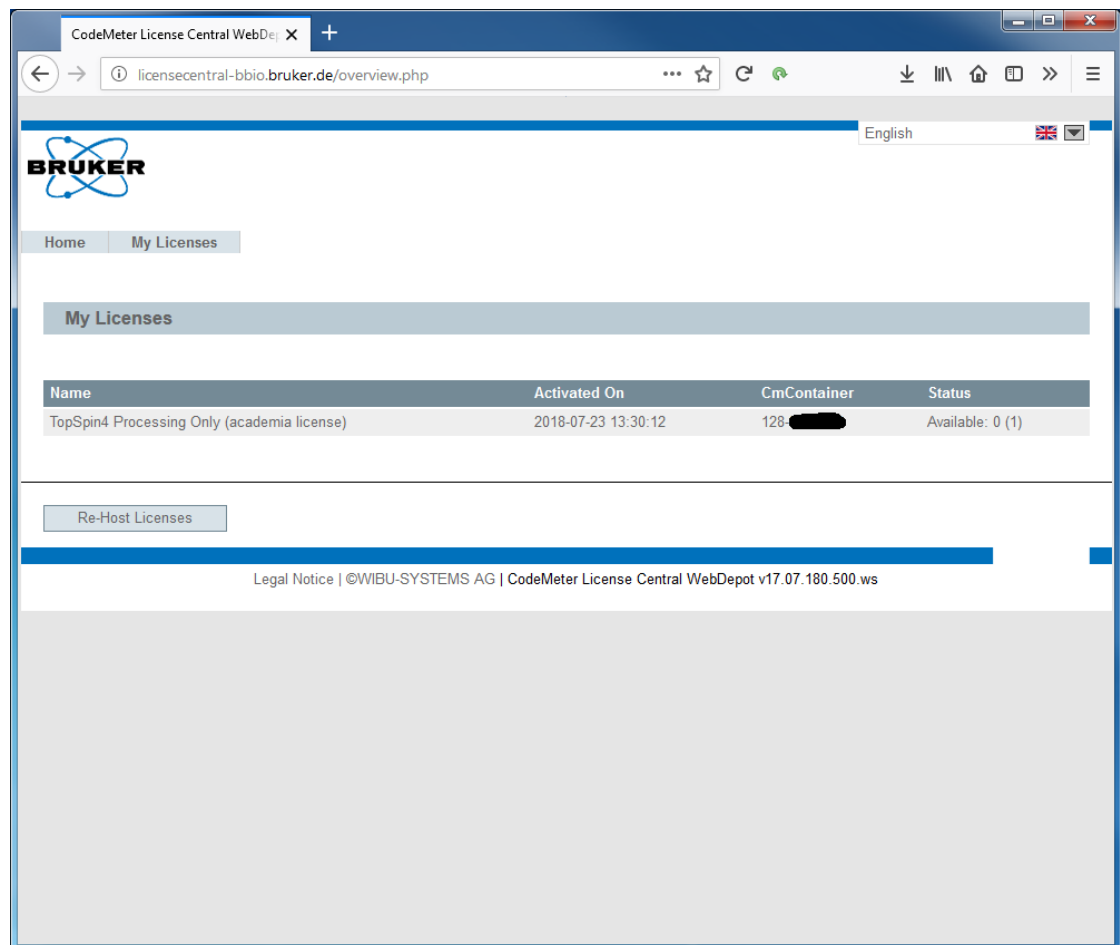
12. There you need to upload the generated receipt file by selecting it and clicking the "Upload Receipt Now" button.



## 4 Moving an installed license to a different computer - Re-Hosting

The licensing system allows to reallocate the license to another computer system, e.g. if the customer intends to move the installation to another computer system. This is called re-hosting and can be performed by the customer without the need to contact Bruker license department.

Open the welcome screen of the license activation process as described before. Enter the same ticket number that has been used already for the initial activation of the license. The current collection of licenses is shown:



After a click on “Re-Host Licenses” the system offers to deactivate this license. If several licenses are active on the current system, select the item that shall be deactivated.

# Moving an installed license to a different computer - Re-Hosting

English

BRUKER

Home My Licenses

### Re-Hostable Licenses

To re-host licenses from one CmContainer to another CmContainer:

1. Make sure that the CmContainer with Serial 128-XXXX is connected to this computer. If this CmContainer is not connected to this computer, connect it now and click "Rescan for CmContainer".
2. Select the licenses you want to re-host.
3. Click "Deactivate Selected Licenses Now".
4. After the successful deactivation of the selected licenses, you can activate them again in another CmContainer.

<input checked="" type="checkbox"/>	Name	Activated On	CmContainer	Status
<input checked="" type="checkbox"/>	TopSpin4 Processing Only (academia license)	2018-07-23 13:30:12	128-XXXX	Activated

Deactivate Selected Licenses Now

Offline license transfer

My Licenses

Legal Notice | ©WIBU-SYSTEMS AG | CodeMeter License Central WebDepot v17.07.180.500.ws

CodeMeter License Central WebDepot

licencentral-bbio.bruker.de/deactivate.php

English

### Online License Transfer

**!** Please wait! The selected licenses are transferred. This process may take several minutes to complete. Please do not remove the CmContainer during this process and do not reload this page.

Starting license transfer.  
Creating license request.  
Downloading license update.

<input checked="" type="checkbox"/>	Name	Activated On	CmContainer	Status
<input checked="" type="checkbox"/>	TopSpin4 Processing Only (academia license)	2018-07-23 13:30:12	128-XXXX	Activated

Offline license transfer

My Licenses

Legal Notice | ©WIBU-SYSTEMS AG | CodeMeter License Central WebDepot v17.07.180.500.ws

## Moving an installed license to a different computer - Re-Hosting

After clicking “Deactivate Selected Licenses Now” the marked license is removed from the current computer and assigned back to the ticket. Now the license can be activated on another computer system by providing the ticket code again.



# 5 License Installation Scenarios

## 5.1 Single-Place Solution

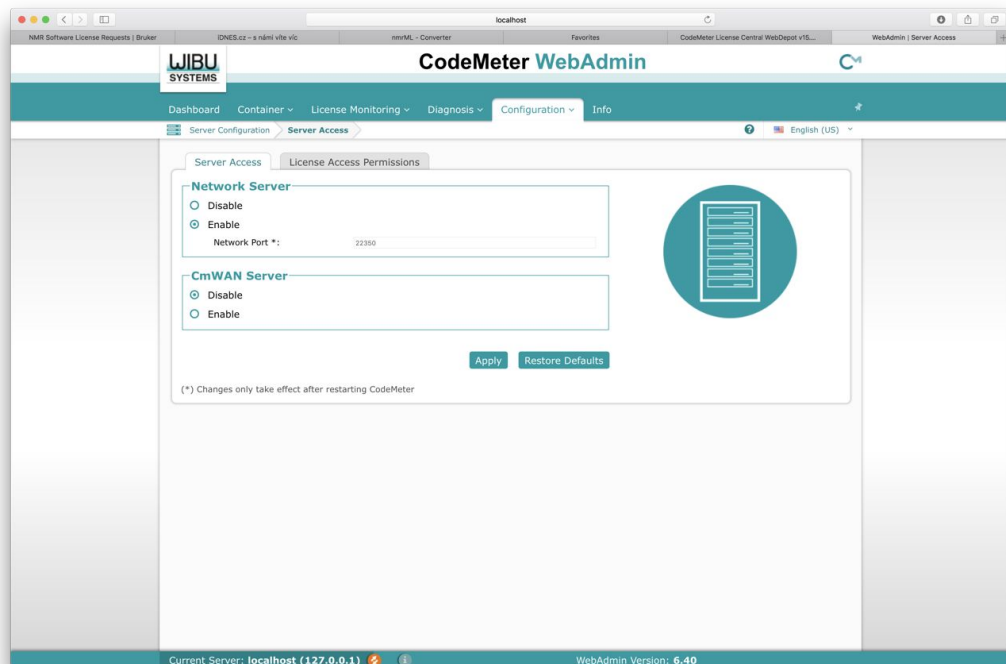
For single-place installations the product license should be activated on the computer with the software installation. The product(s) can be started and used only on this system where the license activation has been performed. In this case, nothing needs to be configured beyond the activation process as described above. For an additional installation of software on other computer systems, further license activation(s) must be executed on these systems.

## 5.2 Multi-Place Solution - Floating License

For multi-place installations, one central computer is defined as license server which hosts all product licenses. Other computers then access this license server in order to get their product licenses dynamically when required and do not need local license activations then. This gives a great flexibility for a multi-place installation and is also known as “floating license”. E.g. more installations can be prepared than product licenses available and the overall number of licenses for products then limits the number of installations that can be active at the same time.

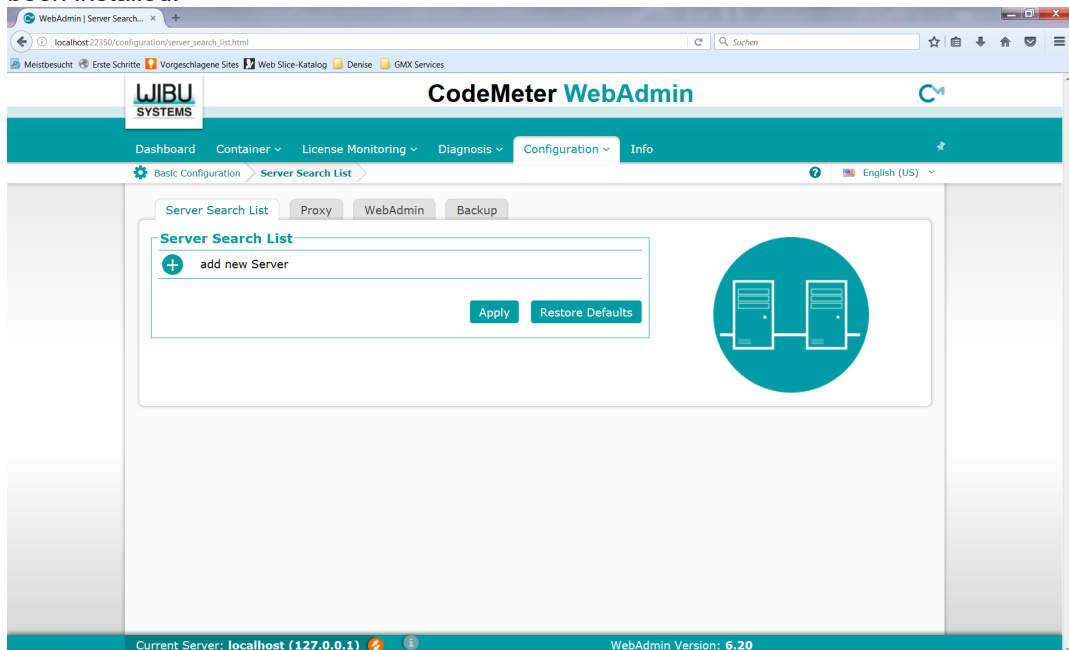
In order to let a system act as license server please follow these steps for the license setup:

1. Use the ticket to activate the license package on the computer defined as license server, as described above.
2. On this central server, in a web browser (FireFox preferred) navigate to the following address: <http://localhost:22350>
3. You should see the “CodeMeter WebAdmin” user interface. Select “Configuration” from the menu bar and “Server” in the second menu line. Enable the check box “Network Server” and leave the proposed value for “Network Port” unchanged:



Click on “Apply” and close the web page.

4. On every computer that may request licenses later, open in a web browser the address <http://localhost:22350>. In the displayed WebAdmin interface, select “Configuration” and “Basic”. Under “Server Search List” click on “add new server” and enter the network address (name or TCP/IP address) of the server system where the license package has been installed.



Click on “Apply” and close the web page. This computer will now use the server system for resolving any license requests and licenses are taken from the pool of licenses which have been activated on the license server computer. Generally, licenses are only allocated if the application is running and returned back automatically afterwards.

It is possible to create more sophisticated license management scenarios by e.g. configuring more than one address in the server search list and providing more than only one license server. For in-depth information and further support for such situations, please click the question mark button at the top right edge or refer to documentation which is available from the vendor of the license management system, Wibu-Systems, at <http://www.wibu.com>



# 6 Contact

## Manufacturer

Bruker BioSpin GmbH  
Silberstreifen 4  
D-76287 Rheinstetten  
Germany  
<http://www.bruker.com>

WEEE DE43181702

## NMR Hotlines

Contact our NMR service centers.

Bruker BioSpin NMR provides dedicated hotlines and service centers, so that our specialists can respond as quickly as possible to all your service requests, applications questions, software or technical needs.

Please select the NMR service center or hotline you wish to contact from our list available at:

<https://www.bruker.com/service/information-communication/helpdesk.html>

E-mail: [nmr-support@bruker.com](mailto:nmr-support@bruker.com)







**Bruker Corporation**

[info@bruker.com](mailto:info@bruker.com)  
[www.bruker.com](http://www.bruker.com)

Order No: H162728